

2009 IGI'S Summer Day Camp

June 15 -
August 21



145 Plaza Drive, Westmont IL
630-325-3333

where learning lasts a lifetime.....since 1979

Potential Camp Schedule:

Mondays / Fridays:

- 7:30 Check in & free time
- 9:00 Inside organized game
- 10:00 Outside organized game
- 11:30 Lunch
- 12:00 Arts and Crafts
- 1:00 Ty Warner Spray Park
- 3:30 Afternoon snack
- 4:00 Chalk/Basketball games in back
- 5:00 Trampoline
- 5:30 Day Camp ends

Tuesdays / Thursdays:

- 7:30 Check in & free time
- 9:30 Gymnastics instruction
- 10:30 Organized Sports outside/Play at Ty park
- 11:30 Lunch
- 12:00 Movie of the Week
- 1:00 Swimming
- 3:30 Afternoon snack
- 4:00 Team building activities
- 5:00 Free time in gym
- 5:30 Day Camp ends

Wednesdays: (field trip day)

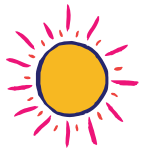
- 7:30 Check in
- 9:30 Tramp & Pit Games
- 10:30 Organized sports outside
- 11:30 Lunch/ Picnic at Ty park
- 12:00 prepare / depart for field trip
- 4:00 Organized inside (Time to wind down!!)
- 4:45 Trampoline
- 5:30 Day Camp Ends

Times and days are subject to change based upon conditions which may arise that conflict with the outlined schedule above.



Schedule is subject to change. Field Trips are subject to change





Summer Day Camp 2009

IGI's Summer Day Camp is a great way for your children to have a **TON** of **FUN** throughout the entire summer, while learning to make new friends, taking additional gymnastics classes, experimenting with their artistic side, and going on some **EX-CITING** field trips. One week sessions are being offered each week with a different field trip (adventure day) scheduled. Our energetic, responsible & experienced counselors ensure that your children are happy, safe and having **FUN!** Campers must bring their own sack lunch every day. Swimsuits & towels should be brought on Mon, Tues, Thurs, & Fridays. On Wednesdays, **ALL** campers must wear an IGI CAMP T-shirt which will be provided. Most field trip expenses & daily snacks are included in the camp fees. Camp Hours are 7:30 a.m. to 5:30 p.m. See next page for registration options.

Note: There may not be camp the Week of June 22 - June 27th for Competitive Summer Camps.



General Camp Policies:

- Wear athletic shoes for outdoor activity. During indoor activity the children will be barefoot. Make sure to dress comfortably.
- Bring a **HEALTHY** lunch/snack & water bottle. (Bottled water and sport drinks are available for purchase. Only water bottles allowed inside the gym area.)
- Bring leotards/swimsuit if necessary on gym/swim days.
- Please label **ALL** personal belongings. (IGI is not responsible for those items lost or stolen.)
- PLEASE send sunscreen labeled with your name for the outside activity.
- To receive a complete refund for camp, the Front Desk must be notified **IN WRITING** no less than *2 weeks* in advance of camp start date.



	No Field Trip	No Field Trip	Member		Non Member	
	Member	Non Member	Field Trip	Field Trip**	Field Trip	Field Trip**
5 FULL DAYS	\$225	\$240	\$250	\$280	\$265	\$295
5 HALF DAYS	\$185	\$200	\$210	\$240	\$225	\$255
4 FULL DAYS	\$195	\$210	\$220	\$250	\$235	\$265
4 HALF DAYS	\$175	\$190	\$200	\$230	\$215	\$245
3 FULL DAYS	\$165	\$180	\$190	\$220	\$205	\$235
3 HALF DAYS	\$125	\$140	\$150	\$180	\$165	\$195
2 FULL DAYS	\$135	\$150	\$160	\$190	\$175	\$205
2 HALF DAYS	\$100	\$115	\$125	\$155	\$140	\$170
1 FULL DAY	\$90	\$105	\$115	\$145	\$130	\$160
1 HALF DAY	\$75	\$90	\$100	\$130	\$115	\$145
	Field Trips					
Week 1	Lombard Roller Skating Rink		June 17th		June 17th	
Week 2	Brookfield Zoo**			June 24th		June 24th
Week 3	Suburbanite Bowl		July 1st		July 1st	
Week 4	Glazed Expression**			July 8th		July 8th
Week 5	Marke's Chocolate Factory**			July 15th		July 15th
Week 6	Cypress Cove Water Park**			July 22nd		July 22nd
Week 7	Darien Sportsplex Ice Skating		July 29th		July 29th	
Week 8	Enchanted Castle**			August 5th		August 5th
Week 9	Lost Mountain Miniature Golf		August 12th		August 12th	
Week 10	TBD**			August 19th		August 19th